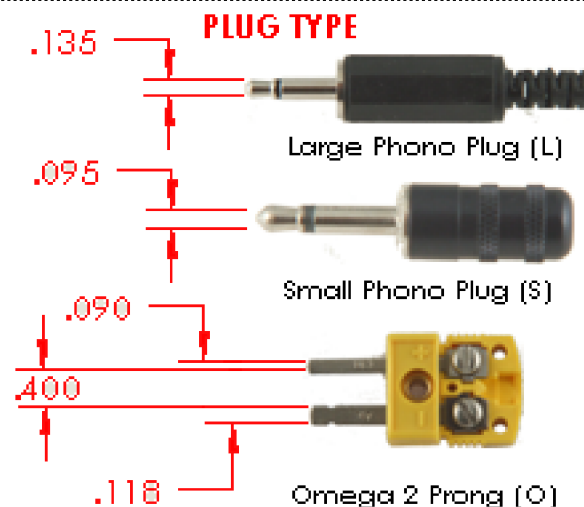


PART NUMBER	A	B
SLD-11-Mo-A.025B.030-J-S	.025 / .635	.030 / .762
SLD-11-Mo-A.500B.030-J-S	.500 / 12.7	.030 / .762
SLD-11-Mo-A.750B.030-J-S	.750 / 19.05	.030 / .762
SLD-11-Mo-A.100B.030-J-S	.100 / 2.54	.030 / .762
SLD-11-	?	?
	in / mm	in / mm

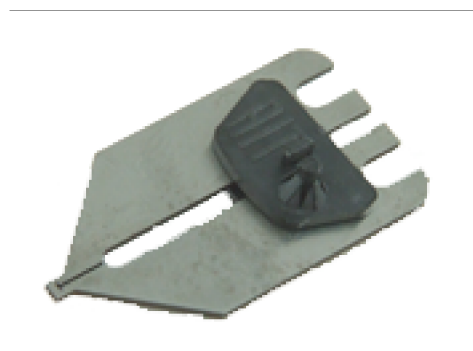
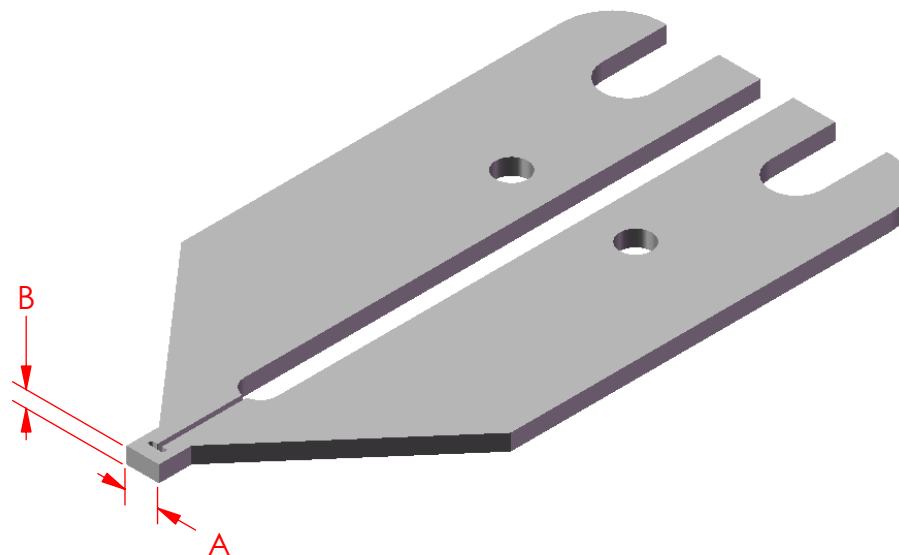
Thermo-couple Type	Material	Max Temp Range
E	Chromega®/Constantan	900°C (1652°F)
J	Iron / Constantan	750°C (1382°F)
K	Chromega® / Alomega®	125°C (2282°F)

Standard Tip Material:
Molybdenum (Mo)



Part Number Construction
SLD-11-Mo-A.250B.030-J-S

Plug Type
Thermocouple
Dimensions
Material
Product Series



Custom configurations and Materials
available.
Contact the factory for assistance.

AIT PROPRIETARY THIS DOCUMENT AND THE DATA DISCLOSED HEREIN OR HEREWITH IS NOT TO BE REPRODUCED, USED OR DISCLOSED IN WHOLE OR IN PART TO ANYONE WITHOUT WRITTEN PERMISSION OF AIT		SIGNATURE		DATE		Microtronic GmbH www.microtronic.de							
		DRAWN											
		CHECKED				DESCRIPTION							
		ENGINEER											
MC		THIRD ANGLE PROJECTION				SIZE		JOB NUMBER		DRAWING NUMBER		REV	
3D						A				SLD-11		A	
DO NOT SCALE DRAWING						SCALE: 1/1				SHT 1 OF 1			