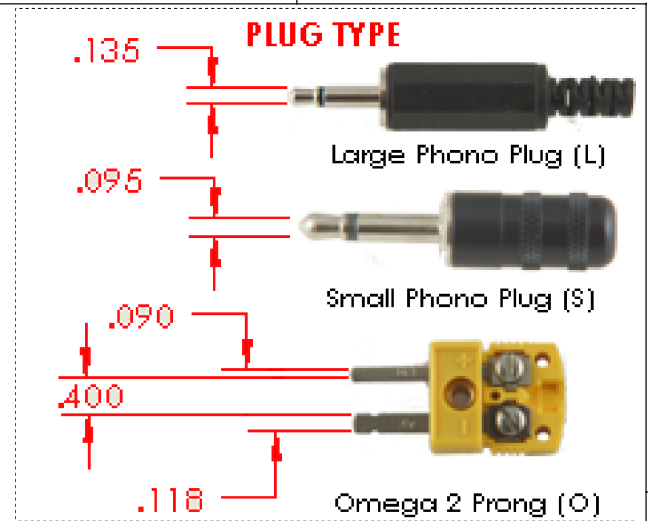


PART NUMBER	A	B	C
SLD-6-Mo-A.005B.005C.010-J-O	.005 / .127	.005 / .127	.005 / .127
SLD-6-Mo-A.010B.010C.020-J-O	.010 / .254	.010 / .254	.020 / .508
SLD-6-Mo-A.015B.015C.030-J-O	.015 / .381	.015 / .381	.030 / .762
SLD-6-Mo-A.025B.015C.035-J-O	.025 / .635	.015 / .381	.035 / .889
SLD-6-	?	?	?
	in / mm	in / mm	in / mm

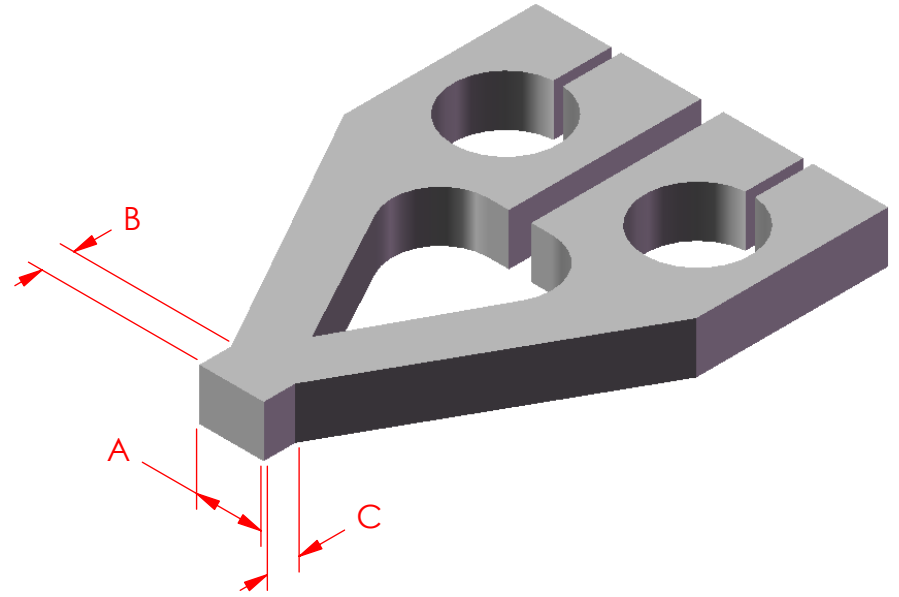
Standard Tip Material:
Tungsten (W)
Molybdenum (Mo)



Part Number Construction
SLD-6-Mo-A.005B.005C.010-J-O

- Plug Type
- Thermocouple
- Dimensions
- Material
- Product Series

Thermo-couple Type	Material	Max Temp Range
E	Chromega®/Constantan	900°C (1652°F)
J	Iron / Constantan	750°C (1382°F)
K	Chromega® / Alomega®	125°C (2282°F)



Custom configurations and Materials available.
Contact the factory for assistance.

AIT PROPRIETARY THIS DOCUMENT AND THE DATA DISCLOSED HEREIN OR HEREWITH IS NOT TO BE REPRODUCED, USED OR DISCLOSED IN WHOLE OR IN PART TO ANYONE WITHOUT WRITTEN PERMISSION OF AIT		DIMENSIONS ARE IN INCHES DIMENSIONING & TOLERANCING PER ANSI Y14.5 UNLESS OTHERWISE SPECIFIED: TOLERANCES .X = .1 .XX = .01 .XXX = .005 .XXXX = .0005 ANGLES = 0°30' BREAK SHARP EDGES .010-.020 ALL SMALL FILLETS .020-.040 ALL FINISHED SURFACES 125		SIGNATURE _____ DATE _____ DRAWN _____ CHECKED _____ ENGINEER _____		Microtronic GmbH www.microtronic.de			
MC THIRD ANGLE PROJECTION 		3D		DO NOT SCALE DRAWING		DESCRIPTION _____ SIZE A JOB NUMBER _____ DRAWING NUMBER SLD-6 REV A SCALE: 1/1 SHT 1 OF 1			