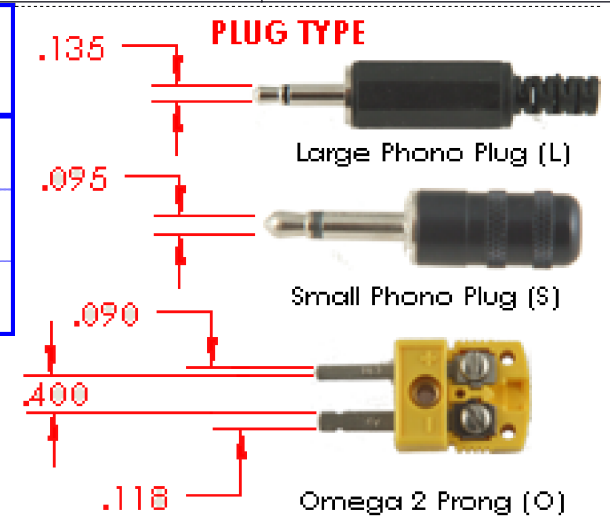


PART NUMBER	A	B
SLD-9-Mo-A.500B.050-E-S	.500 / 12.7	.050 / 1.27
SLD-9-Mo-A.750B.075-E-S	.750 / 19.05	.075 / 1.905
SLD-9-Mo-A1.00B.120-E-S	1.00 / 25.4	.120 / 3.048
SLD-9-	?	?
	in / mm	in / mm

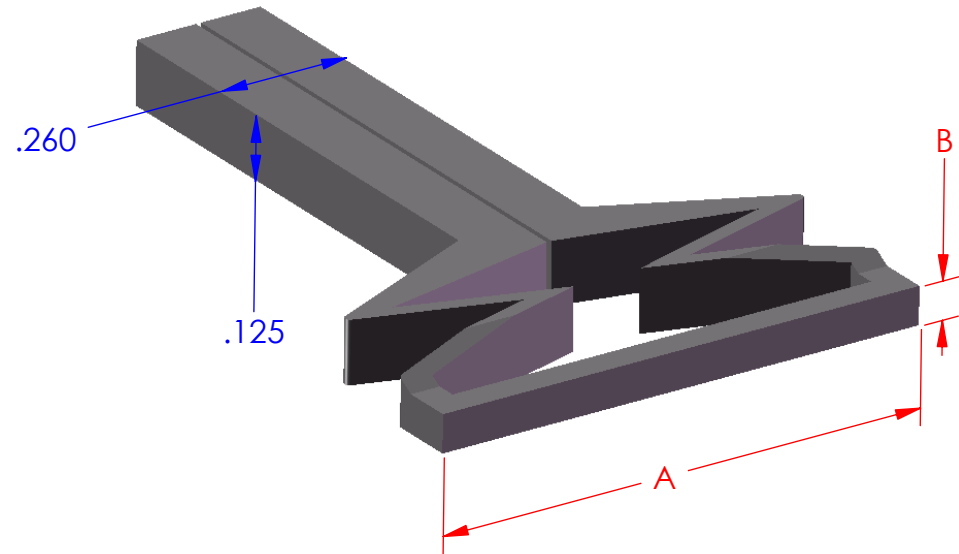
Thermo-couple Type	Material	Max Temp Range
E	Chromega®/Constantan	900°C (1652°F)
J	Iron / Constantan	750°C (1382°F)
K	Chromega® / Alomega®	125°C (2282°F)

Standard Tip Material:
Molybdenum (Mo)



Part Number Construction
SLD-9-Mo-A.500B.050-E-S

Plug Type
Thermocouple
Dimensions
Material
Product Series



Custom configurations and Materials
available.
Contact the factory for assistance.

AIT PROPRIETARY THIS DOCUMENT AND THE DATA DISCLOSED HEREIN OR HEREWITH IS NOT TO BE REPRODUCED, USED OR DISCLOSED IN WHOLE OR IN PART TO ANYONE WITHOUT WRITTEN PERMISSION OF AIT		SIGNATURE		DATE		Microtronic GmbH www.microtronic.de					
		DRAWN									
		CHECKED				DESCRIPTION					
		ENGINEER									
MC		THIRD ANGLE PROJECTION									
3D								SIZE	JOB NUMBER	DRAWING NUMBER	REV
								A		SLD-9	A
DO NOT SCALE DRAWING						SCALE: 1/1				SHT 1 OF 1	